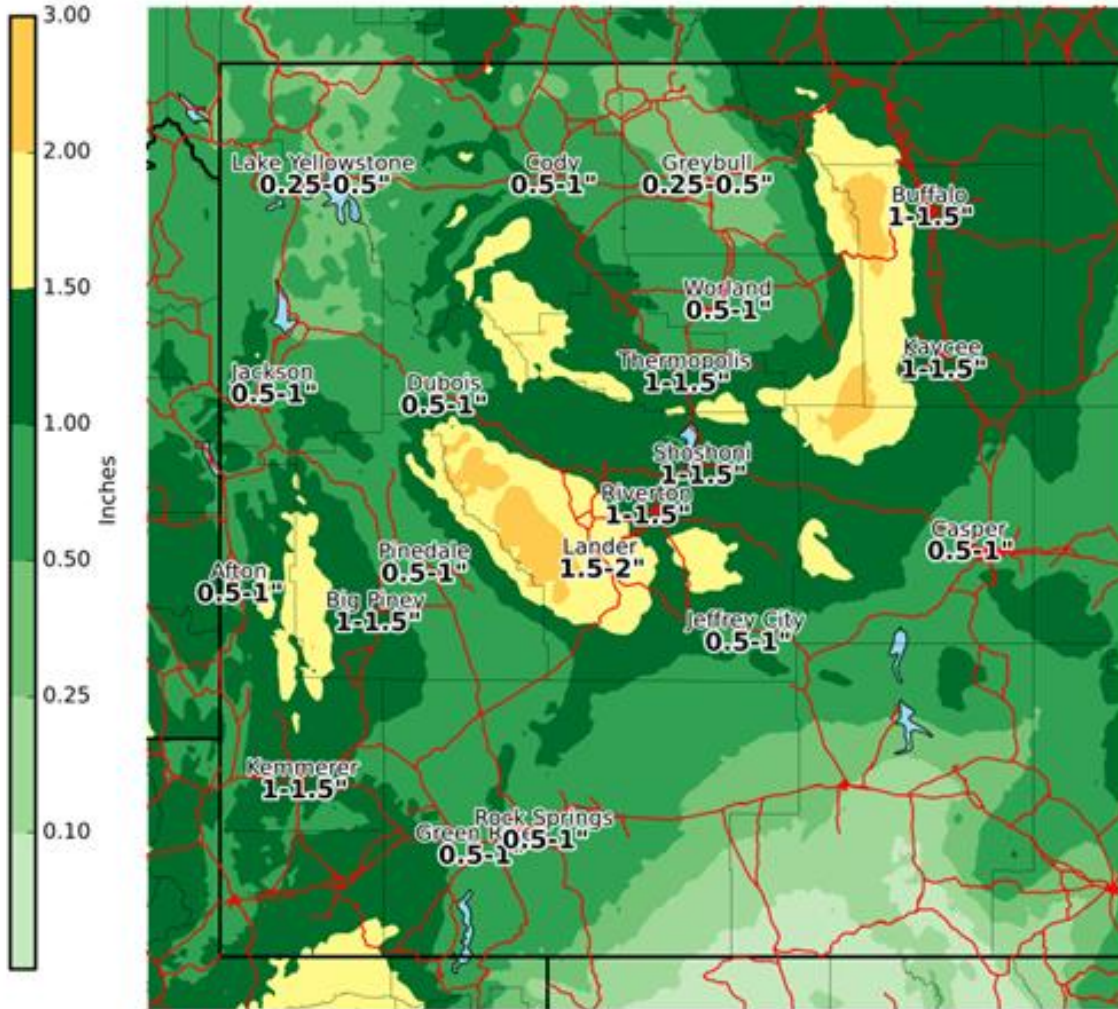




Widespread One Inch Precipitation Amounts

3 Day Total Precipitation Starting This Morning

Valid: 05/11/2018 12:00 AM - 05/14/2018 12:00 AM MDT



National Weather Service
Riverton Wyoming
05/11/2018 01:33 AM MDT

Follow Us:
weather.gov/Riverton

Message of the Day:



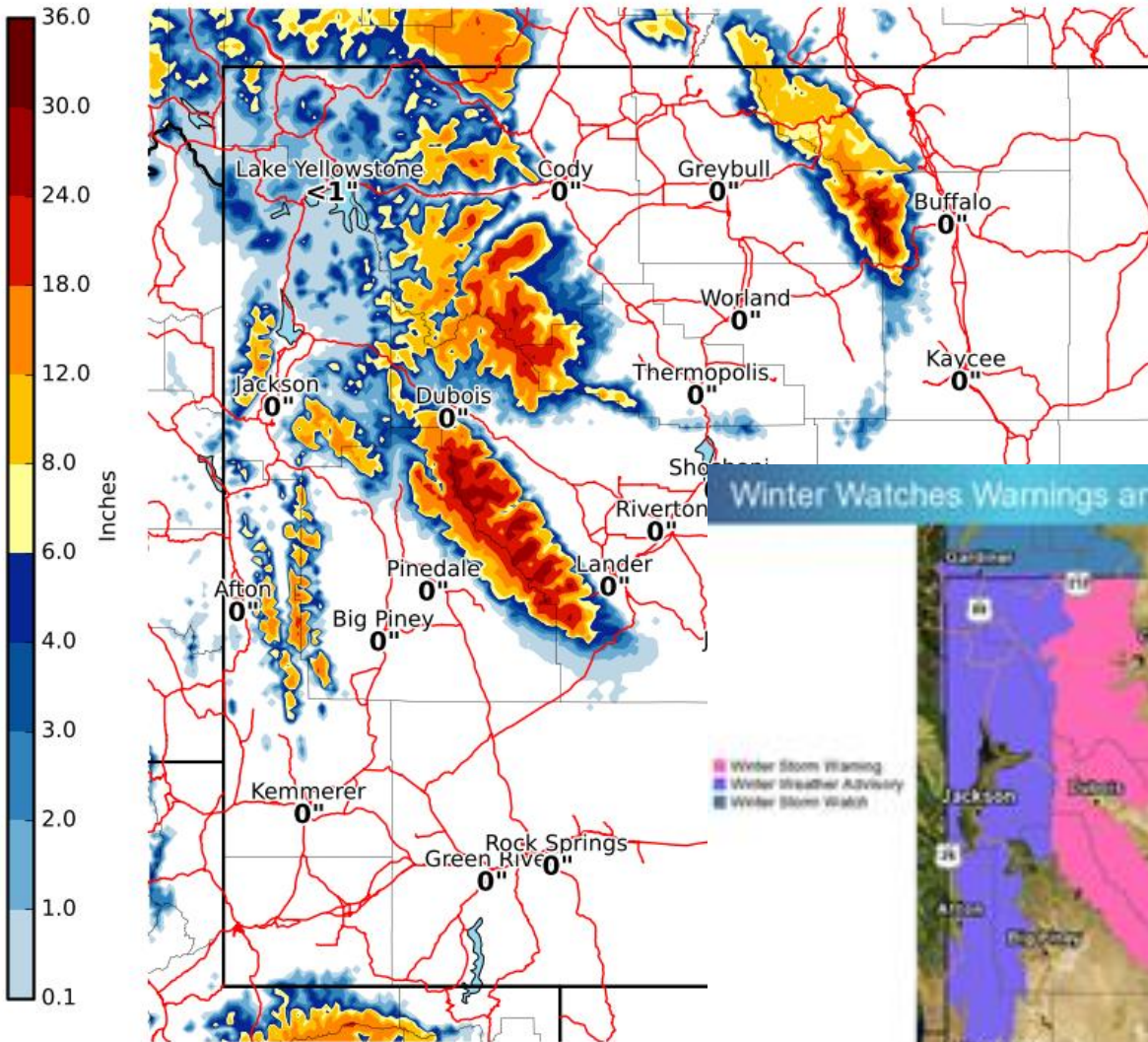
- The rate of mountain snow melt will slow as temperatures cool; however, river rises are likely through the weekend because of widespread precipitation totals of 1 inch.
- A cool, wet storm system will impact Wyoming today through the weekend with the heaviest precipitation expected this afternoon and tonight. Winter Storm Warnings and Winter Weather Advisories are in effect for the mountains for heavy snow from 11 am today until 5 am Sunday.



Heavy, Wet Snow Expected above 8,000 Feet

3 Day Total Snow Starting This Morning

Valid: 05/11/2018 12:00 AM - 05/14/2018 12:00 AM MDT



National Weather Service
Riverton Wyoming
05/11/2018 01:37 AM MDT

Winter Storm Warnings & Winter Weather Advisories

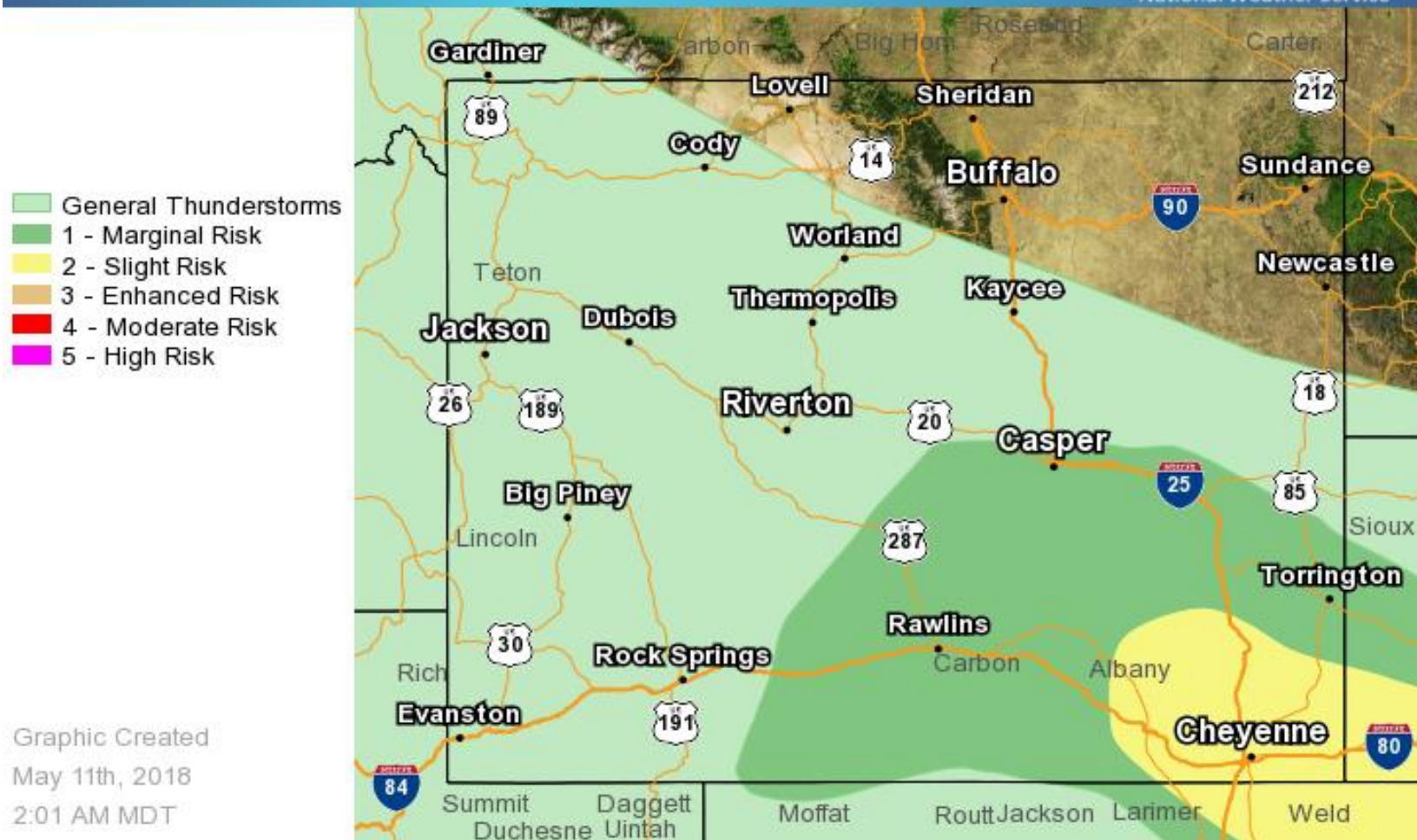
in effect from 11 am Friday until 5 am Sunday

- Accumulating snow will generally fall above 8000 feet
- The heaviest snow will fall tonight night and Saturday morning
- 10" to 20" of snow possible across portions of the Absaroka, Bighorn, and Wind River mountains



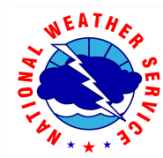
Isolated Strong to Severe Thunderstorms Possible Across Eastern Sweetwater & Southern Natrona County Today

Today's (Friday) Severe Weather Outlook

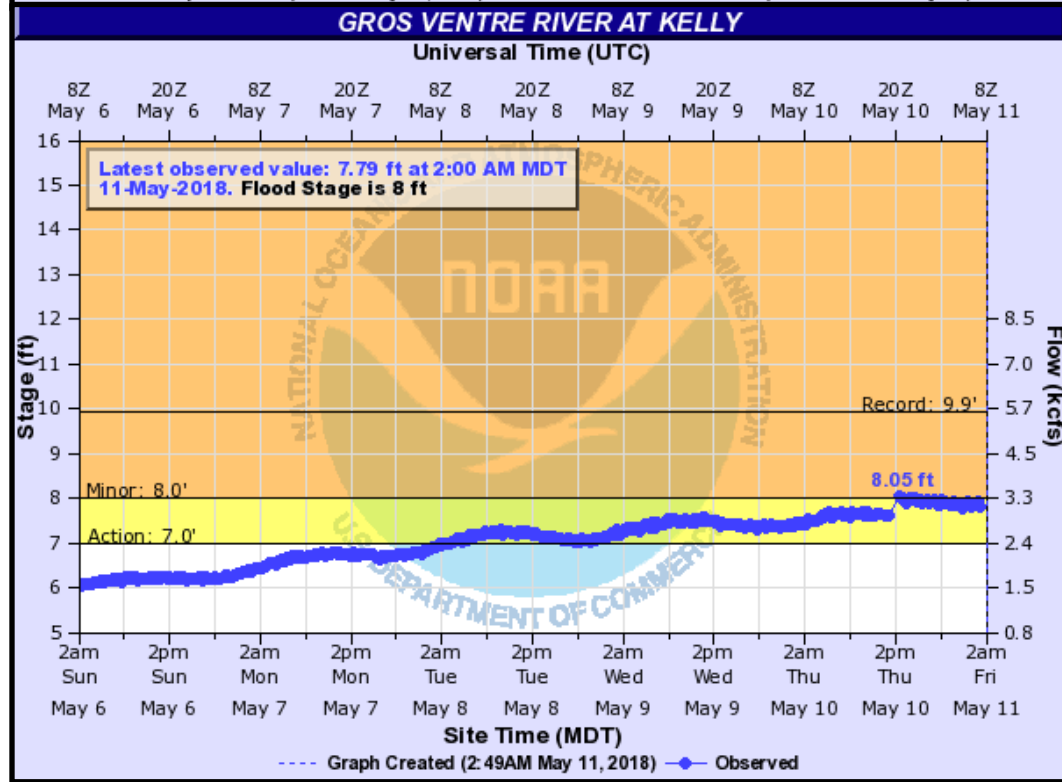
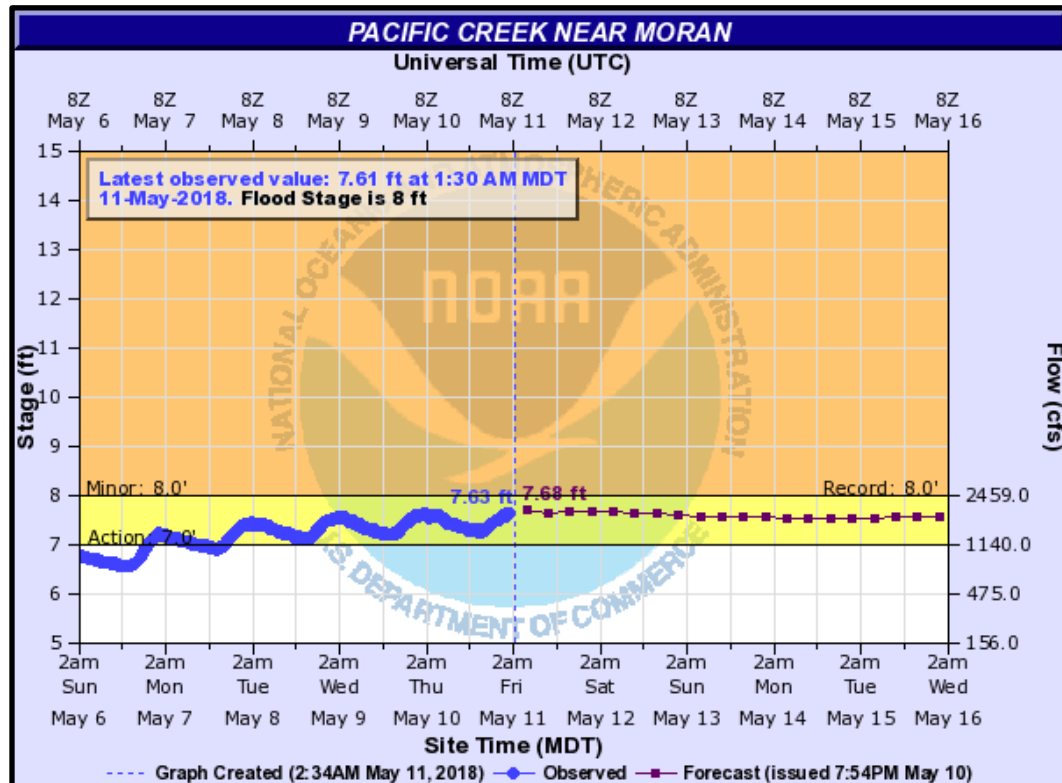


Today's (Friday) Severe Weather Outlook:

- The Storm Prediction Center has determined that there is a marginal risk of severe thunderstorms across eastern Sweetwater and southern Natrona County today. Strong wind gusts of 58 mph or greater will be the primary hazard.



Pacific Creek & Gros Ventre River (Teton County)

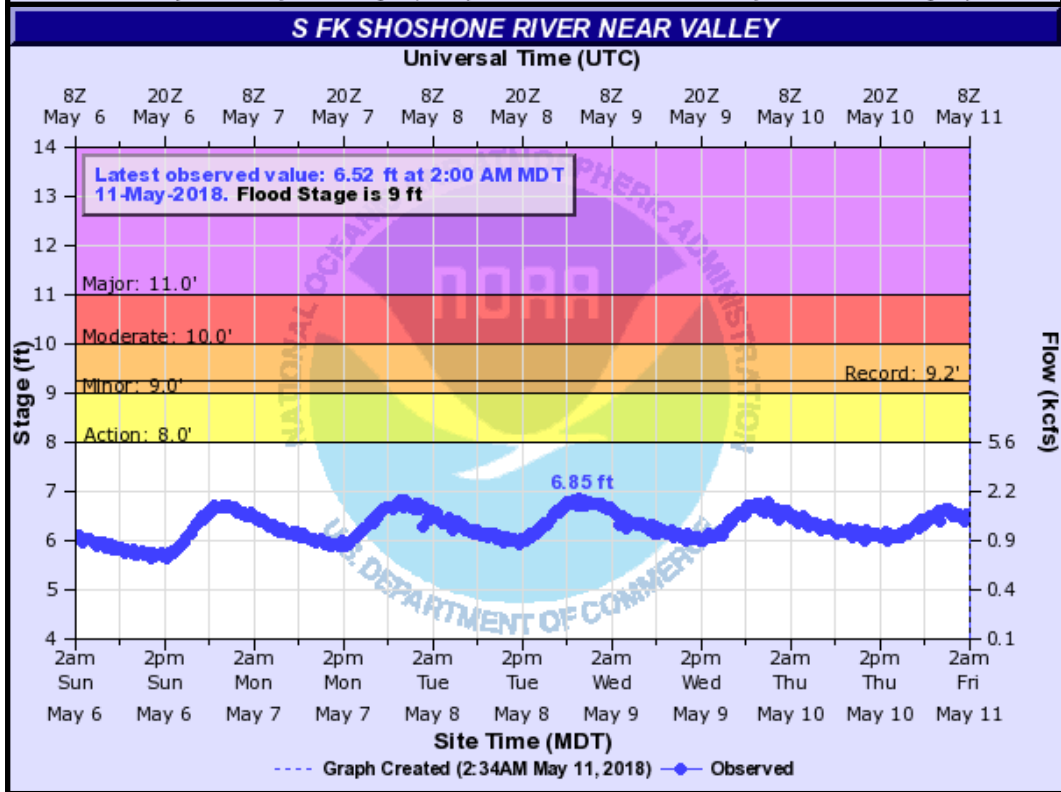
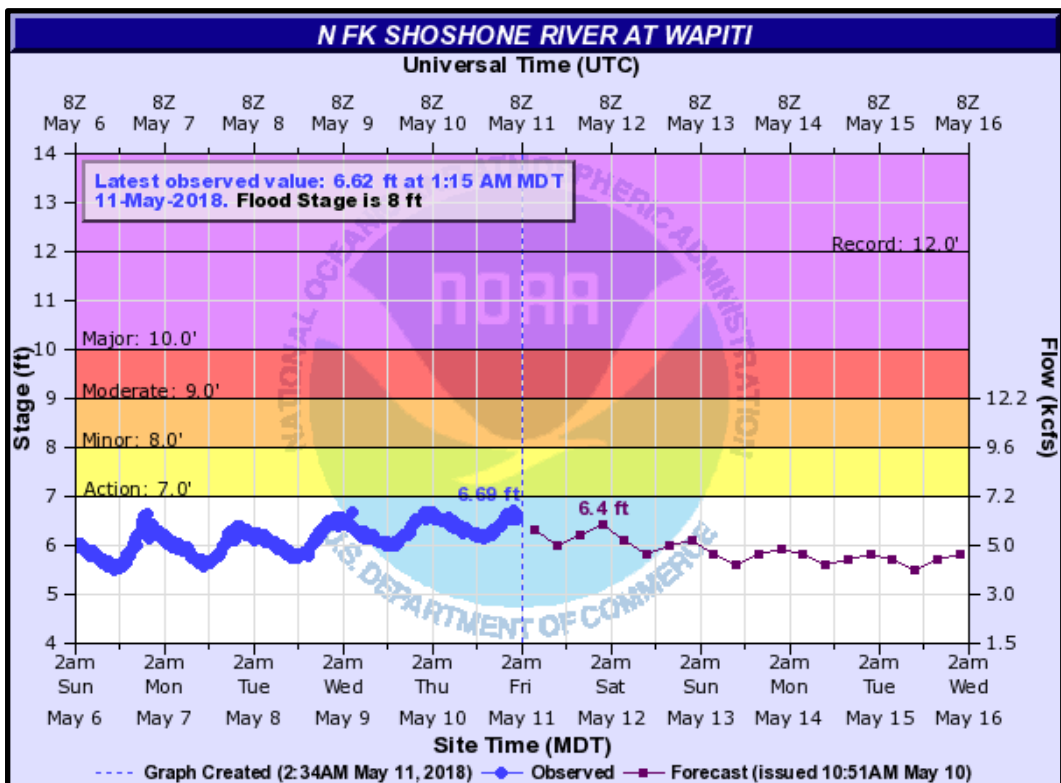


Impacts: Bankfull conditions with minor low-lying flooding.





North & South Forks of Shoshone River (Park Co.)

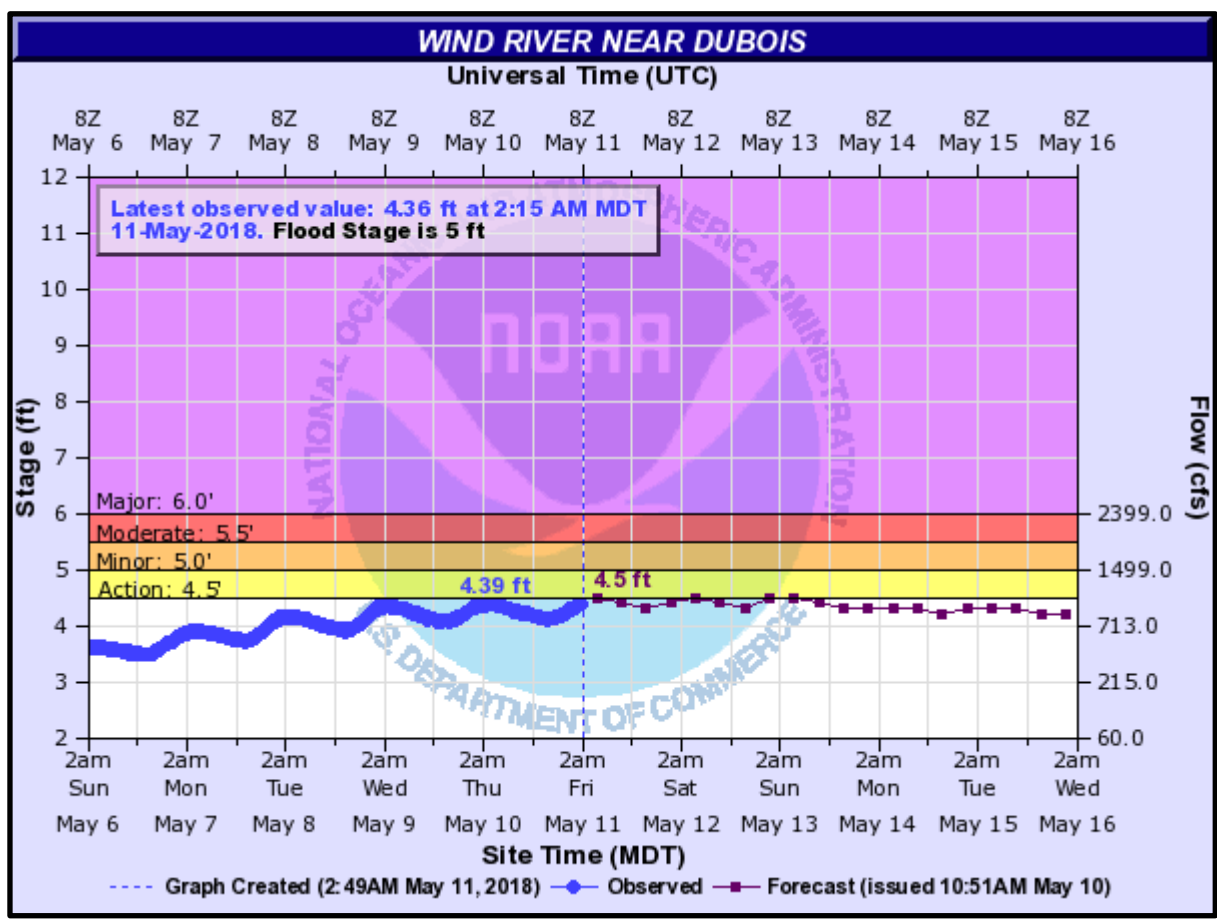


Impacts: Remaining just below bankfull.





Wind River at Dubois



Impacts: Remaining just below bankfull.



Quick Summary – Rain and Snow with Rising River Levels

- It will be cooler and wetter Friday through the weekend
- The heaviest precipitation falls Friday afternoon through Saturday morning
- Widespread precipitation totals of 1 inch or more expected with snowfall of 10 to 20 inches forecast above 8,000 feet in the central and northern mountains
- Be alert to rising river levels – headwater creeks & streams usually peak during the early morning hours. River stages & forecasts can be obtained on the NWS Riverton website at: <https://water.weather.gov/ahps2/index.php?wfo=RIW>



River Flood Resources



- [Flood Quick Facts](#)
- [River Stages + SnoTel Data by Basin](#)
- [Advanced Hydrologic Prediction Service](#)
- [Wyoming Water Supply Outlook](#)
- [Snowpack & Reservoir Levels](#)
- [Climate Summary](#)
- [Current Hydrology Report \(pdf\)](#)

@NWSRiverton

weather.gov/riw
1-800-211-1448

NWS Riverton

Building a Weather-Ready Nation